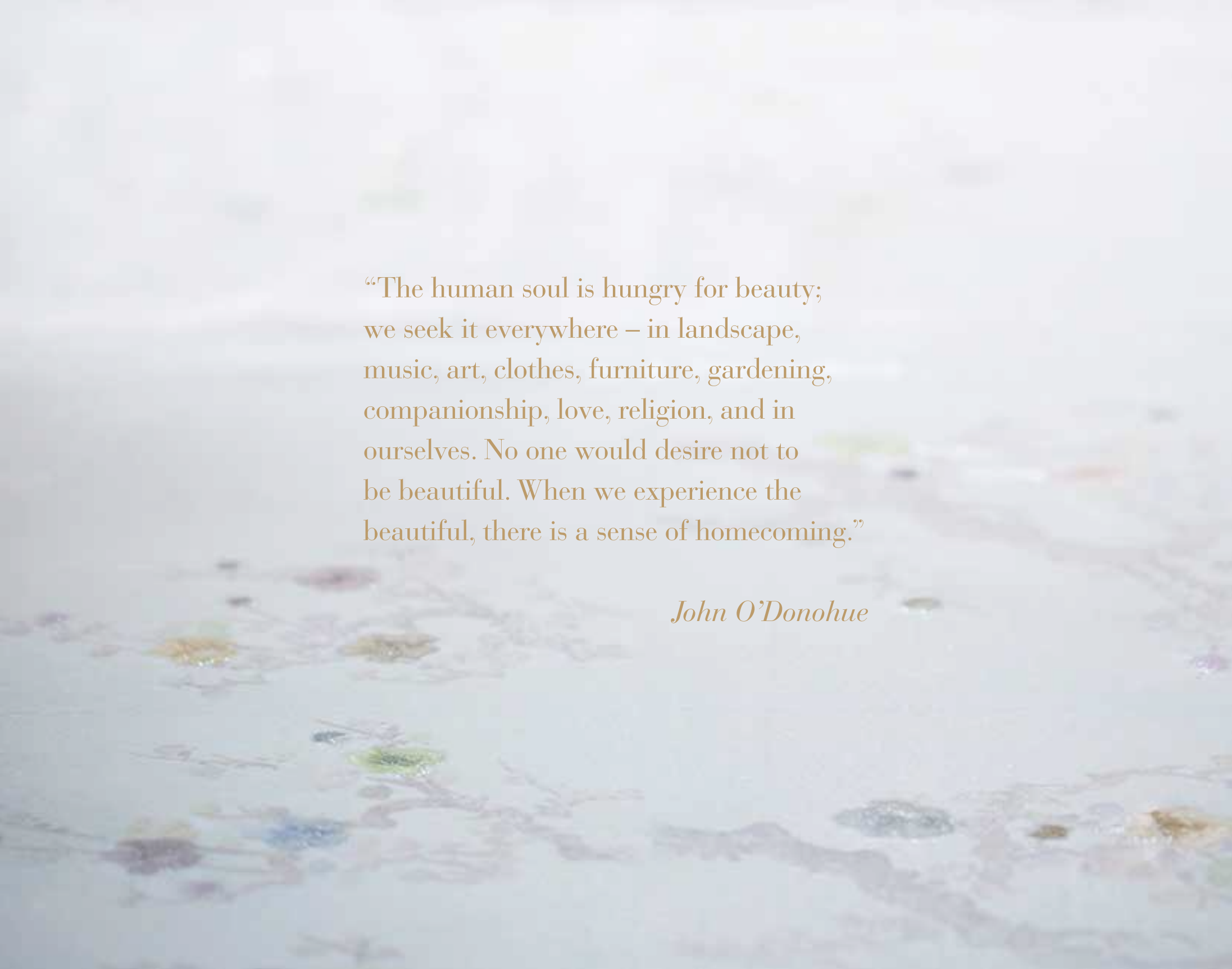




THE RESIDENCES
MANDARIN ORIENTAL
BANGKOK

The background of the image is a soft-focus photograph of a body of water, likely a pond or lake. Several lily pads are visible, some with water lilies in bloom. The colors are muted and pastel, with shades of light blue, green, and white. The overall atmosphere is peaceful and serene.

“The human soul is hungry for beauty;
we seek it everywhere – in landscape,
music, art, clothes, furniture, gardening,
companionship, love, religion, and in
ourselves. No one would desire not to
be beautiful. When we experience the
beautiful, there is a sense of homecoming.”

John O'Donohue

Crafted for Tasteful Living.

As an address that celebrates not only exclusivity but originality, The Residences at Mandarin Oriental, Bangkok curates a lifestyle based on inspiration and craftsmanship.

This emphasis on the exception to the rule is evident in the beautiful furnishings custom-designed exclusively for The Residences.

Contemporary and stylish, each design in this one-of-a-kind collection is an imaginative blend of form and function, and hand-crafted by master craftsmen in a meticulous manufacturing process to ensure the highest quality.

For new owners who endorse this design vision and wish to retain the original décor in their homes, The Residences offer two purchase options: fully fitted and fully furnished.



Purchase Options

The Residences will feature the highest specifications of any luxury residential property in Bangkok, presented in two different options for buyers' selection.

The fully fitted option includes:

All original fittings and fixtures, including an extensive European luxury home product collection.

The fully furnished option includes all the features of the fully fitted option, plus:

Loose furniture

Carpets, curtains and wallpaper

Lighting fixtures

Please inquire with any of The Residences' property consultants for further information.



Living Room



Actual photo from sales gallery



The Emperor's Couch

This hand-crafted couch, with a unique two-tone cream cushion against a charcoal fabric back, is undeniably the centrepiece of the living area. Its luxurious cushion, amplified with a one-of-a-kind striped stitching to provide outstanding comfort and pressure distribution, is coupled with an antique brass metal frame with just the right curvature to make for comfortable armrests.



Willow Storage Cabinet

This exquisite cabinet is the perfect expression of simplicity, held together by a luxurious brass frame. Meticulously crafted, this item comes in an Oak stained in Pearl and Silver coat – a metallic glossy finish of brownish grey - that is exclusive to The Residences at Mandarin Oriental, Bangkok.



The Queen's Lounge Chair

The perfect complement to the couch, this chair is an object of desire whose simple lines and contrasting colours make a striking impression. Its luxurious soft cream cushion is juxtaposed with a charcoal leather back, held by a stunning winged metal frame in antique brass.



White Marble Coffee Table

Functional and long-lasting, this beautifully designed coffee table is an exquisite blend of the modern and the classic. From the top down, this unique piece is distinguished by a carved white marble top wrapped in sumptuous charcoal leather, supported by luxurious brass metal legs.



“A Weave of Gold” Side Table

Featuring a midnight-hued marble tray top framed by a sleek gold rim, this sensational side table gives equal emphasis to form and function. The tray top is supported by elaborately crafted brass legs, each wrapped in authentic charcoal leather, forming a sophisticated vertical pattern before coming together in a beautiful and intricate knotted design.



Willow TV Cabinet

In an oak stained in pearl and silver coat, exclusive to The Residences at Mandarin Oriental, Bangkok, this TV cabinet comes in a pared-down, sleek design. Apart from the high-quality oak wood, crafted into a geometry of balance and precision, the cabinet is bound by brass framings, with designer handles to finish off the look.



Master Bedroom



Actual photo from sales gallery



River Master Bed

A large bed tailored-made for the master bedroom, this exquisite design is noteworthy for its high gloss wooden frame and the unique luxurious winged design of the headboard, cloaked in a special soft-textured fabric on the inside, set off by a lavish leather exterior.



Two-Tone Leather Armchair

True to its concept of chromatic duality, this large elegant two-tone leather armchair comes in a very unique colour combination of cream and charcoal, supported by high-gloss wooden stilts.



Leather Worktop

The leather worktop is a paragon of design virtuosity, with handy drawers on both sides and a hidden cabinet in the leather center. The wooden top comes in The Residences' signature colour of oak stained in pearl and silver contrasted with luxurious dark leather, held up with sleek, willowy antique brass railings.



Powder Stool

This simple yet exquisite powder table stool is both handy and comfortable. This seat is upholstered in a soft ivory fabric and set atop minimalist charcoal high gloss wooden legs.



Brass Rails Night Table

A rare and ingenious design, the brass rails night table infuses functionality with visual intrigue. A set of three wooden drawers in oak stained in pearl and silver is enclosed in an outer framework of delicate brass railings and tempered glass top, as if suspended in a glass case of exquisite beauty.



Guest Bedroom



Actual photo from sales gallery



River Guest Bed

A large bed tailored for the guest bedroom, this fine delicacy is noteworthy of its antique brass legs with dark bronze finish and the unique luxurious brass and copper metal frame that encases the Ivory and cream leather headboard in a sleek modern design.



Copper Rails Night Table

A rare and ingenious design, the brass rails night table infuses functionality with visual intrigue. A set of three wooden drawers in oak stained in pearl and silver is enclosed in an outer framework of delicate brass railings and tempered glass top, as if suspended in a glass case of exquisite beauty.



Pale Green Leather Worktop

The pale green leather worktop is a paragon of design virtuosity, with handy drawers on both sides and a hidden cabinet in the leather center. The wooden top comes in The Residences' signature colour of oak stained in pearl and silver contrasted with rare pale green leather, held up with sleek, willowy antique brass railings.



Black Wooden Chair

A perfect complement to the leather worktop, this wooden chair is crafted with timber in a high-gloss finish and lined with authentic ivory leather, in a simple design that combines comfort and function in equal measure.



Dining Room & Foyer



Actual photo from sales gallery



Sleek High Console

This sleek high table console is crafted with the utmost delicacy and thoughtfulness. Located in the foyer, the subtle beauty of this design is highlighted by ivory-coloured drawers rendered in a special eggshell pattern, set off by high-gloss, slender black antique brass metal legs.



White Marble Dining Table

Functional and durable, this beautifully designed dining table is an exquisite blend of the modern and the classic. From the top down, this unique piece is distinguished by a pristine white marble top, set atop a striking two-tone dark timber and brass metal column.



Pale Green Dining Chair

True to its concept of chromatic duality, this large elegant pale green leather dining chair comes in a very unique colour combination of pale green and charcoal, supported by high-gloss wooden stilts.



Shoes-Changing Stool

An eminently functional and comfortable stool for changing shoes, this deign features a low-rise leather back and white timber frame topped with a soft cushion in Umber.



Charcoal Wheeled Cabinet

Durable and highly functional, this wheeled cabinet serves as an extra storage unit within the powder rooms and bathrooms. It's modernist frame is made with charcoal veneer wood with brass linings, and is set on wheels for extra convenience.



Decorative Items

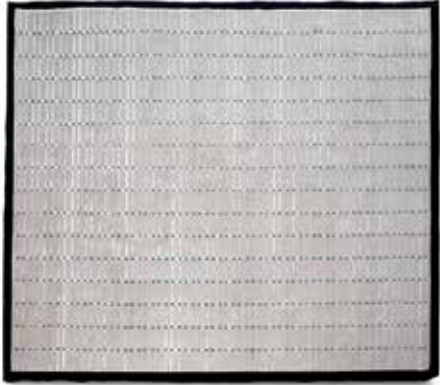


Actual photo from sales gallery



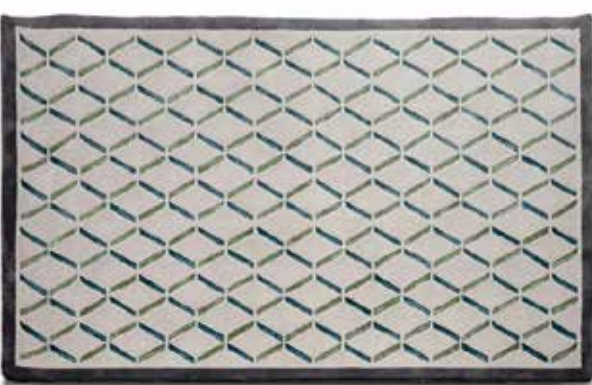
Tai Ping Yukatai Rug

Specially designed and hand tufted at The House of Tai Ping, a specialist in creating bespoke rugs tailored to the preferences and requirements of its customers, this Yukatai loose carpet rug is an exquisite blend of earth tones and exotic patterns.



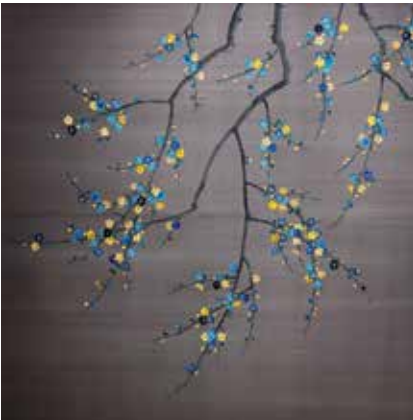
Hand Tufted Rug

Simple and understated, this nylon and viscose hand-tufted rug featuring an intricate pattern and dark linings is hand-picked for The Residences' master bedrooms.



Hand Tufted Rug

Simple yet rich detail, this nylon and viscose hand-tufted rug featuring an intricate aquamarine pattern set off by dark linings is hand-picked for The Residences' guest bedrooms.



Fromental Artisan Silk Wallpaper

This delicate artisan silk wallpaper in a 20th Century Prunus Pattern is a one-of-a-kind Fromental masterpiece, designed exclusively for The Residences' master bedrooms. Artists at Fromental, a London-based specialist in luxurious home décor fabrics that blend classic British and contemporary design motifs with the ancient art of embroidery, handcrafted this headboard, using the finest silk and paints to create an opulent and elaborate Prunus in Bitumen pattern.



Fromental Artisan Silk Wallpaper

This supremely delicate artisan wallpaper in a Chinoiserie Gun Powder Pattern is a one-of-a-kind masterpiece by Fromental, a London-based specialist in luxurious home décor fabrics that blend classic British and contemporary design motifs with the ancient art of embroidery. Artists used the finest silk and paints to handcraft this sublime and elaborate Chinoiserie Piece.



About ICONSIAM

ICONSIAM is a landmark project jointly undertaken by three of Thailand’s leading property developers: **Siam Piwat**, the company behind many contemporary lifestyle destinations that have helped define the quintessential Bangkok experience, including Siam Paragon, Siam Center, and Siam Discovery; **Magnolia Quality Development Corporation**, whose portfolio of innovative, holistic residential developments, including the iconic Magnolias Ratchadamri Boulevard, has set new standards for the country’s luxury property market; and **Charoen Pokphand Group**, the multinational conglomerate that has a major presence in numerous industries.

ICONSIAM is strategically located on a 50-rai (20-acre) plot by the Chao Phraya River, with a river frontage of over 400 metres, one of the longest in central Bangkok.

ICONSIAM is conceived as the epicentre of the rise of a new Thailand and a reference-class landmark announcing a new approach to integrated property development. It is expected to create a new axis of social and economic prosperity in Bangkok, and become a must-see destination for visitors from all over Thailand and the world.

It is also at the core of the single biggest tourism-related initiative ever undertaken, involving multiple government ministries, state and municipal agencies as well as the private sector, to revitalise Bangkok’s Chao Phraya River as a global destination.



About Mandarin Oriental

Mandarin Oriental Hotel Group is the award-winning owner and operator of some of the most luxurious hotels, resorts and residences. Having grown from a well-respected Asian hotel company into a global brand, the Group now operates, or has under development, 45 hotels representing almost 11,000 rooms in 24 countries, with 21 hotels in Asia, nine in The Americas and 15 in Europe, Middle East and North Africa.

In addition, the Group operates or has under development, 15 Residences at Mandarin Oriental connected to its properties. The Residences at Mandarin Oriental offer the best of both worlds: the comforts of a private home combined with the unsurpassed amenities and legendary services of Mandarin Oriental.

Through the provision of bespoke benefits, discerning home owners enjoy privileged access to everything one expects as a hotel guest, plus exclusive resident-only privileges.



Disclaimer

The Residences at Mandarin Oriental, Bangkok (“The Residences”) are not developed, sponsored, owned, offered or sold by Mandarin Oriental Hotel Group or any affiliate thereof (MOHG), and MOHG makes no representation, warranty or guaranty of any kind regarding The Residences. The Developer and owners of The Residences use the Mandarin Oriental name and trademarks subject to the terms of revocable licenses from MOHG which may expire or be terminated. The Developer of The Residences is The ICONSIAM Superlux Residence Corporation Limited. MOHG is not responsible in any way for the content of the Developer’s website or Developer’s data collection, use or privacy practices.

All materials, plans, specifications, computer generated images, perspectives in this marketing material are artist’s impressions which serve only as guideline for general conceptual idea of the project. Information provided is deemed accurate at the time of publication. The company reserves the right to change and/or correct details without prior notice.

The information contained in the brochure is subject to change as may be approved by authorities and cannot form part of an offer or contract. All plans are subject to any amendments approved by the relevant authorities. Floors areas and dimensions are approximate and subject to final survey and construction. Illustrations in this brochure are artist’s impression and serve only to give approximate idea of the project. While every reasonable care has been taken in providing this information, its owners or agents cannot be held responsible for any inaccuracies.

Project Owner: The ICONSIAM Superlux Residence Corporation Limited 695 Sukhumvit 50 Road, Prakanong, Klongtoey, Bangkok, Thailand 10260 Tel: (662) 118-2211 Registered Capital: Baht 300 Million Site Location: Charoen-nakhon Road, Khlong-tonsai Sub District, Khlongsan District, Bangkok, Thailand Land Title Deed No. 3044, Plot No. 337
Total Project Area 4-3-62 Rais Construction Start Q3, 2015 Expected Completion Date Q4, 2018



www.moresidencesbangkok.com

